

QUALITY MANAGEMENT SYSTEM

OBJECTIVE

Empower manufacturers by improving quality processes by combining them with DELMIAworks® ERP.

OVERVIEW

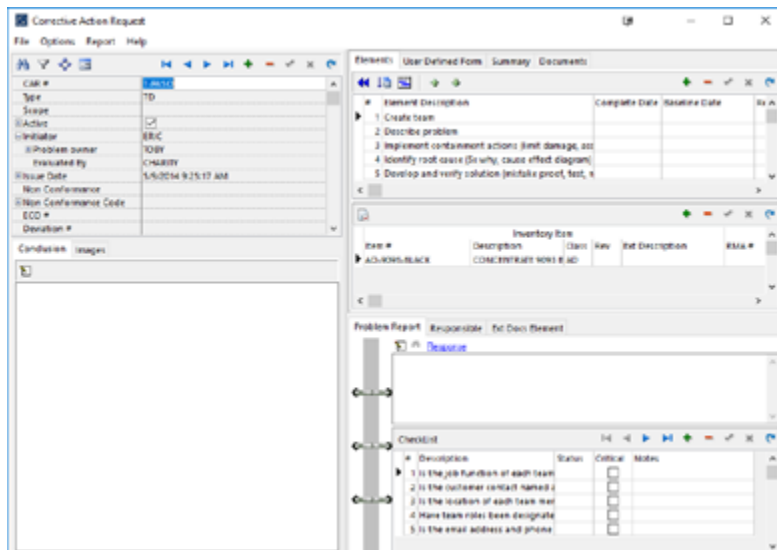
The Quality Management System (QMS) within DELMIAworks provides a systematic approach to meeting all your quality needs. It supplies the tools and capabilities necessary to ensure customer satisfaction and compliance with the most stringent quality standards, including automotive (TS), medical (FDA, 21 CFR Part 11) and ISO standards.

The DELMIAworks QMS gives direct access to all ERP-related information with no redundant data entry. Areas such as RMAs, non-conforming inventory, BOMs and much more are all available for linking. Experience the power of a truly embedded quality system as you eliminate duplicate entries and reduce errors, which in turn cuts costs, saves time and increases communications across your supply chain.

Increase visibility and improve reaction time by pushing the data to those who need it using secure, electronic signatures and approvals. DELMIAworks automatically evaluates workflow status and sends email notifications to internal and external team members, expanding your quality team beyond your four walls to include customers and suppliers in the review and authorization process.

KEY BENEFITS

- Reduce the cost of quality management
- Ensure timely process tracking with automated workflow
- Eliminate maintenance of third party solutions
- Enhance decision making based on readily accessible SPC data analysis, including automatic CMM data import capabilities
- Improve auditing capabilities
- Enhance communication with employees, customers and suppliers
- Directly access all ERP functionality
- Decrease time spent on audits



Corrective Action and other Quality modules support task information, instructions per step, team member assignments and Gantt chart completion tracking capabilities.

QUALITY MANAGEMENT SYSTEM: KEY QUALITY 1 & QUALITY 2 FEATURES

Advanced Product Quality Planning (APQP), Failure Mode and Effects Analysis (FMEA) and Production Part Approval Process (PPAP)

Streamline product launches. Customizable templates for the automotive industry are included.

Compliance Tracking

Ensure the quality compliance certifications for your relevant staff are kept up to date and current.

Corrective Actions Preventive Actions (CAPAs), Product and Process PQ, Risk Assessment

CAPA, PQ and Risk Assessment tools help you meet FDA requirements. Customizable templates for medical device manufacturing are included.

Corrective Action Requests (CARs)

Define, manage, schedule, assign and track CARs to help ensure compliance and meet customer/supplier requirements.

Cost of Quality

See and eliminate poor quality and high production costs in wasted processes and material, such as rejects, unscheduled downtime, returns and rework.

Deviation, Material Review Board and NCMR

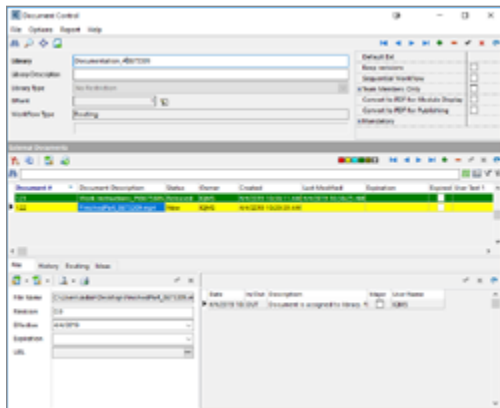
Track all non-conformances and maintain complete audit trails.

Device History Record and Product Lifecycle Management (PLM)

Track products from the design and quoting process through production and to the end of the product's life. These modules promote open communication with suppliers and customers through all stages of the lifecycle.

Document Control

Go paperless and maintain complete control over the lifecycle of documents, from creation through approval, implementation and obsolescence.



Engineering Change Orders (ECOs)

Control revisions to item numbers and track changes to BOMs, routings and equipment.

Gage Repeatability and Reproducibility (R&R) Calibration

Track, maintain and perform calibrations on gages and devices. Conduct Measurement System Analysis with R&R studies.

Quality Audits

Quickly and easily generate quality reports and audit trails for manufacturing personnel and customers alike.

Quick Inspections

Create pre-set inspection requirements, allowing operators to enter the data directly into DELMIAworks through ShopData, FabData, RealTime or via a PDA.

Quality Projects

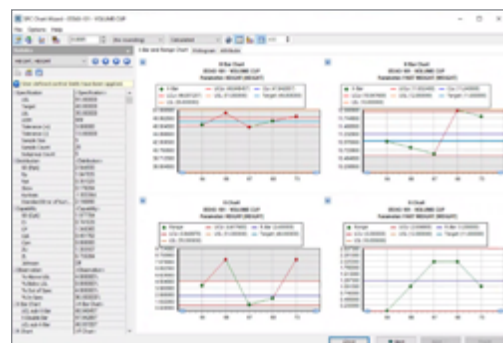
Link quality documents (FEMA, Control Plan, SPC, etc) to specific inventory items, keeping all of the relevant information just a few clicks away.

Past Inspections

Retain and easily report against SPC inspection history, providing an in-depth look into specific inventory items, tools, raw materials and more.

Statistical Process Control (SPC)

Key in data or input automatically from serial devices. Access and evaluate data while machines operate with real-time control charts. Supported charts include X-bar-R, X-MR, p-np and histograms as well as capability analysis with Cpk and Ppk.

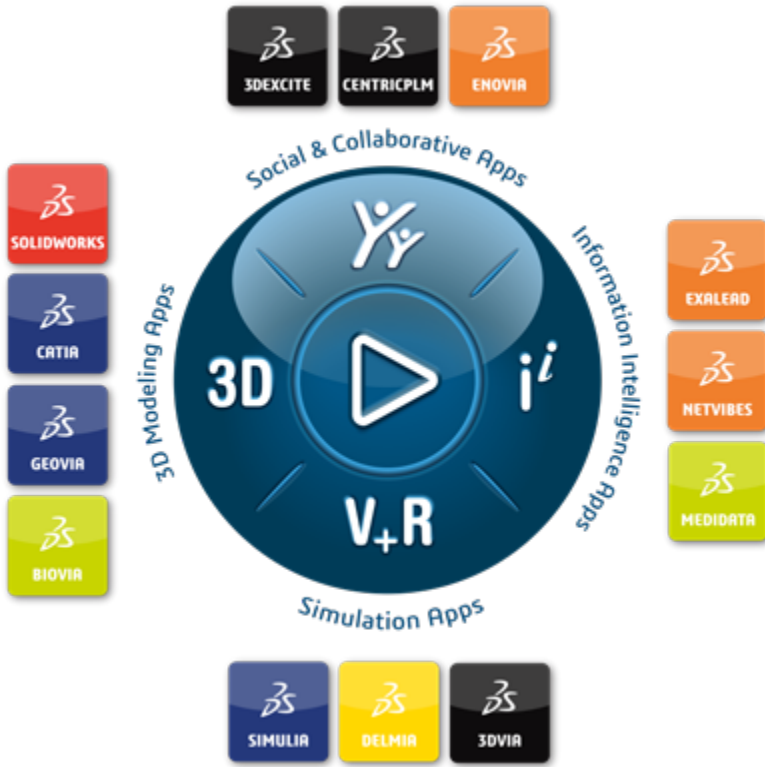


Track and Trace

Maintain visibility and item tracking as products move throughout the supply chain.

LEARN MORE

To learn more about Quality Management System or if you would like more information on the products and services from DELMIAworks, please visit www.3ds.com/delmiaworks.



Our **3DEXPERIENCE®** platform powers our brand applications, serving 11 industries, and provides a rich portfolio of industry solution experiences.

Dassault Systèmes, the **3DEXPERIENCE** Company, is a catalyst for human progress. We provide business and people with collaborative virtual environments to imagine sustainable innovations. By creating 'virtual experience twins' of the real world with our **3DEXPERIENCE** platform and applications, our customers push the boundaries of innovation, learning and production.

Dassault Systèmes' 20,000 employees are bringing value to more than 270,000 customers of all sizes, in all industries, in more than 140 countries. For more information, visit www.3ds.com.

Americas
Dassault Systèmes
175 Wyman Street
Waltham, Massachusetts
02451-1223
USA

Europe/Middle East/Africa
Dassault Systèmes
10, rue Marcel Dassault
CS 40501
78946 Vélizy-Villacoublay Cedex
France

Asia-Pacific
Dassault Systèmes K.K.
ThinkPark Tower
2-1-1 Osaki, Shinagawa-ku,
Tokyo 141-6020
Japan

© 2019 Dassault Systèmes. All rights reserved. 3DEXPERIENCE® the Company, the 3DS logo, BIOVIA, GEOVIA, COLINDORUS, 3DIA, ENOVIA, EXALEAD, NETVIBES, MEDIDATA, CENTRICPLM, 3DPOCTE, SIMULIA, DELMIA, and 3DVIA are registered trademarks or unregistered trademarks of Dassault Systèmes or its subsidiaries in the United States and/or other countries. All other trademarks are owned by their respective owners. Use of any Dassault Systèmes or its subsidiaries trademarks is subject to their express written approval.