



# MANUFACTURING ERP & MES SOFTWARE

Brochure





## **KNOWLEDGE, EXPERIENCE AND EXCELLENCE**

Since 1989, IQMS — now DELMIAWorks — has been providing powerful enterprise resource planning (ERP) software solutions that enable manufacturers to operate more efficiently and more profitably than ever before. Based upon decades of manufacturing experience, DELMIAWorks has developed the most comprehensive and effective ERP solution available. The powerful, wide-ranging solution, combined with a deep commitment to customer satisfaction, is why DELMIAWorks has one of the highest customer retention rates of any ERP provider.

# AN INTELLIGENT, COMPREHENSIVE APPROACH

## MODULES WORKING TOGETHER

Because all modules are designed, developed, and supported by DELMIAWorks, they operate as a powerful and cohesive solution. The innovative DELMIAWorks system is capable of handling all your extended ERP needs with a single database – all without the need for expensive third-party software interfaces. This enables a truly streamlined approach to helping manufacturing enterprises stay lean.

## POWERFUL, ACCESSIBLE TECHNOLOGY

DELMIAWorks designs its powerful modules for those who use it most: employees. The familiar Windows® environment and intuitive graphical interfaces are so simple to learn that training costs are typically a fraction of the fees associated with most ERP providers.

## CENTRALIZED DATA ENGINE

The DELMIAWorks total solution eliminates the complexity and cost of managing multiple databases. The Oracle® powered database is embedded in the DELMIAWorks system, delivering seamless utilization while centralizing business activity across your entire supply chain. That means complete access for accurate and current information to everyone at all times.

## INDUSTRY KNOWLEDGE

Active memberships in organizations such as APICS, Automotive Industry Action Group (AIAG), APICS, OESA, PMA, MDMA, and MAPP help DELMIAWorks keep current with the latest manufacturing issues facing its customers. DELMIAWorks is committed to addressing the ever-changing compliance landscape with modules that adhere to some of the industry's most stringent requirements such as:

- ISO standards
- ISO TS automotive standards
- FDA requirements
- GAAP accounting standards
- Sarbanes-Oxley requirements
- IFRS financial reporting compliance



# CORE ERP MODULES

## Innovative Solutions

DELMIAWorks delivers solutions that help manufacturing enterprises stay lean, agile, and competitive. We streamline processes across discrete, repetitive, and batch process manufacturing environments, whether built-to-order or build-to-stock supply chain models.

## Manufacturing/Shop Floor Planning

DELMIAWorks provides a complete manufacturing and shop floor planning system with all the tools necessary to manage production across one facility or multiple plants. That means users can make instant decisions based on the total production picture. Meanwhile optimized scheduling identifies the best start time for each job and any constraints that may affect delivery.

## Sales and Distribution

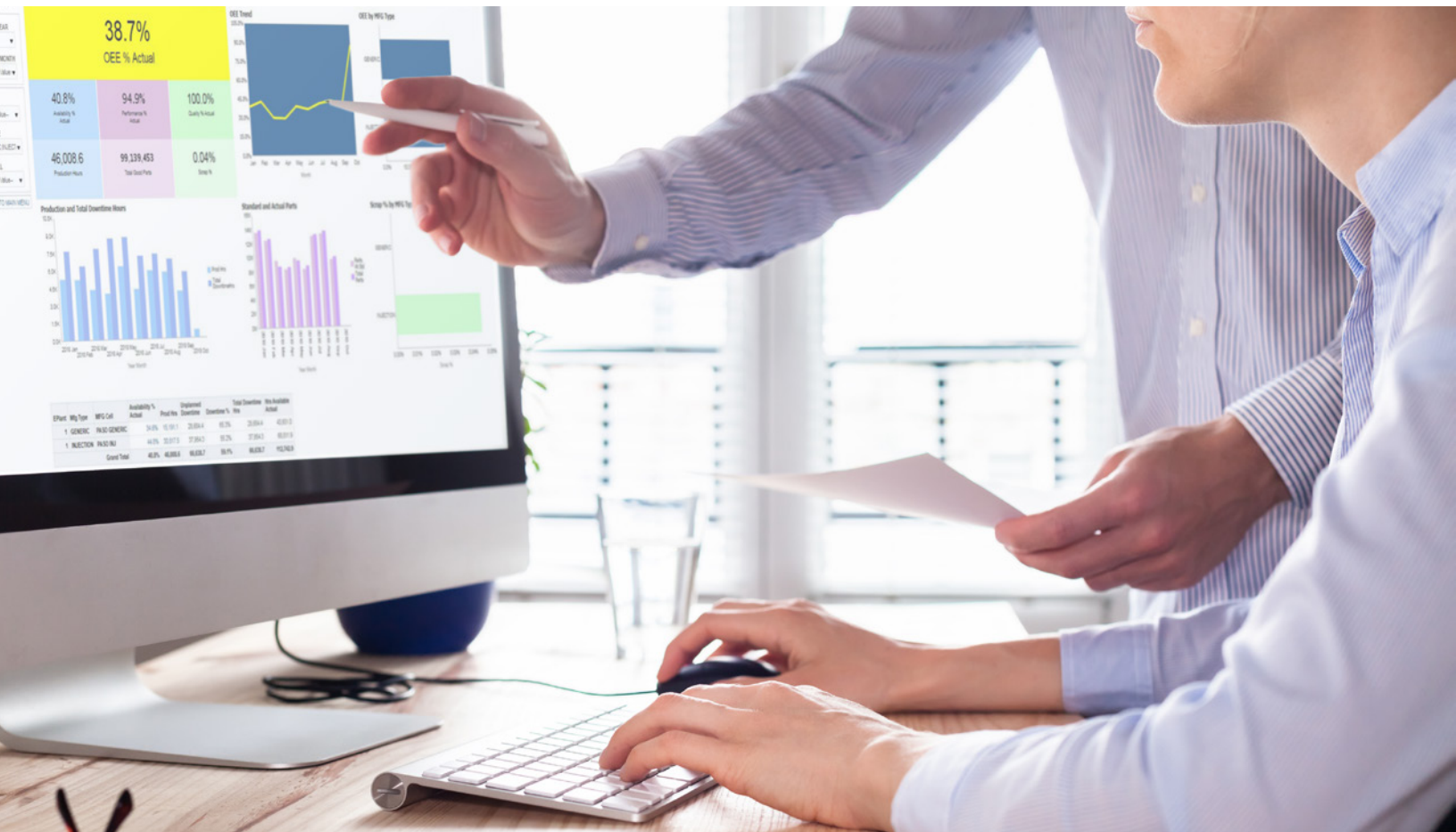
DELMIAWorks's sales and distribution modules allow immediate response to customer inquiries, order status, history, and tracking. Requests, such as advanced shipping notices and multiple shipping destinations are easily addressed. Part number cross references, commissions, and commodities are readily obtainable, and information is always available.

## Financial Management

DELMIAWorks makes financial management easy and flexible by providing seamless access to data from sales, distribution, and manufacturing. Intuitive drill-down capabilities allow quick and accurate data analysis. Additionally, the comprehensive accounting and general office management system conforms to all generally accepted accounting principles and supports multiple companies, profit centers, and currencies.

## Industry-Specific Design

The DELMIAWorks system was designed for various manufacturing environments, supporting the philosophy that speaking the industry language is the key to success. That's why it comes standard with robust functionality for several industry specific needs. DELMIAWorks meets the unique requirements of all manufacturers, including unlimited unit-of-measure conversion, production by length or weight, waste material, family tools, dispatch lists and more. It's easy to mix and match industry types to best suit your environment.



# DELMIAWorks

## A POWERFUL ERP SOLUTION

### Maximizing Supply Chain Efficiencies

DELMIAWorks plays a key role in supply chain management by ensuring efficient electronic communication, streamlined production, accurate labeling and distribution, and the ability to meet the dynamic needs of customers and suppliers. DELMIAWorks brings it all together for you, seamlessly.

### Modular Approach Tailored to Your Company Needs

Start with one of our many base systems, including versions for small, single-site facilities; large multi-plant, multi-language facilities, and the facilities that are in-between. All of these options are built with a comprehensive solution that features manufacturing and inventory control, sales and distribution, and financial management. Then add enhancement modules to best meet your company's specific requirements – what you need when you need it, allowing the system to grow with your business.

### Singular Design and Execution Concept

The DELMIAWorks system is conceived, designed, executed, and supported with one development vision. This provides total control over future development of the software and eliminates the need for costly third-party applications. DELMIAWorks modules come together inherently while other vendors' solutions come together via a contract.



# CHOICE IS THE NEW CLOUD

The cloud can be a highly effective deployment model for ERP, but not all cloud options are equal, and for some companies, the cloud may not be the right solution.

The Choice is the New Cloud program features three deployment models for the DELMIAWorks system that are designed to support the needs of manufacturing firms. Many of these businesses need to balance costs with the flexibility to meet certification requirements and customize their ERP solution to drive innovation and enhance existing operations. Because the DELMIAWorks deployment models enable customers to either own the software or act as a single tenant, manufacturers do not have to compromise on control no matter which choice they make.

- **Software as a Service (SaaS)** is for customers that want to take advantage of the DELMIAWorks system on a subscription basis. The deployment runs in DELMIAWorks' secure, robust cloud-based data center. Managed services and support are included in the subscription.
- **Managed Cloud** is for manufacturers that want to own their DELMIAWorks license but take advantage of a hosted cloud deployment. Customers purchase a perpetual license of the DELMIAWorks system, which is hosted in DELMIAWorks' cloud-based data center. Managed services are included as part of the support cost, which is billed periodically.
- **Premise** is for customers that want to run DELMIAWorks software in their own data center either directly on servers or in a private cloud. Manufacturers purchase a perpetual license, and support is billed periodically. Managed services are optional.

In guiding manufacturers to choose the right deployment option for their business, DELMIAWorks works with companies to answer key questions that will affect their decisions.

# INDUSTRIES SERVED

## AUTOMOTIVE MANUFACTURING ERP SOFTWARE



As a long-standing AIAG member and participant in the eAPQP Work Group, DELMIAWorks has extensive knowledge of automotive standards and how to best address your unique industry requirements.

## AEROSPACE AND DEFENSE MANUFACTURING ERP SOFTWARE



Avoid the turbulence with industry-specific A&D manufacturing ERP software that addresses your unique cost challenges while satisfying your regulatory requirements.

## ASSEMBLY MANUFACTURING ERP SOFTWARE



Unlike other ERP vendors, DELMIAWorks offers assembly-specific software that fits your business with features, such as dispatch lists, labor reporting, sub-assembly support, and line clearance security.

## FOOD & BEVERAGE MANUFACTURING ERP SOFTWARE



From monitoring and controlling quality, to ingredient traceability, shelf-life tracking, and recipe management, DELMIAWorks provides food and beverage manufacturers the tools necessary to succeed and flourish.

## MEDICAL MANUFACTURING ERP SOFTWARE



The comprehensive DELMIAWorks ERP solution provides a host of critical capabilities medical device manufacturers need to succeed, such as compliance with FDA and other regulatory requirements, lot and serial tracking, and manufacturing traceability, among others.

## GENERAL, CONSUMER, CONTRACT AND MULTI-PROCESS MANUFACTURING ERP SOFTWARE



Whether you use a build-to-order or build-to-stock supply chain model, DELMIAWorks systematically streamlines processes across process, discrete, and repetitive manufacturing environments.

## PACKAGING MANUFACTURING ERP SOFTWARE



DELMIAWorks' packaging-specific manufacturing ERP software adeptly handles lot and serial traceability, UPC labeling, pack outs, external and internal document control and BOM flexibility so that your company can improve its operational excellence.



## **DELMIAWorks** **YOUR TECHNOLOGY PARTNER**

From the time you make DELMIAWorks your technology partner throughout the entire relationship, DELMIAWorks specialists are available to assist you wherever you are, in whatever language you speak. We deliver an innovative ERP solution that extends far beyond simply providing software. DELMIAWorks is proud to offer its customers one of the best maintenance packages available, featuring:

- Customized goal-oriented implementation plans
- Award-winning “live” support services
- Flexible and varied training options
- Enhancement-driven user meetings and online customer forums
- Free software technology upgrades

## **RELY ON DELMIAWorks**

Manufacturers worldwide have been relying on the DELMIAWorks system for more than 25 years. DELMIAWorks is a trusted source for delivering the most comprehensive and effective ERP solution available, which is why customers continually retain DELMIAWorks as their enterprise software provider of choice. Rely on DELMIAWorks for all your business needs.





# WHAT MAKES DELMIAWorks DIFFERENT

The overarching differentiator for DELMIAWorks is the unique combination of factory floor process control and monitoring coupled with ERP functionality. Most systems are either ERP or MES; with DELMIAWorks, these systems are integrated as one native solution. This integration provides a true, real-time vision and record of the shop floor.

## **LOWER COSTS THROUGH A SINGLE PLATFORM WITH A CONSISTENT, INTUITIVE INTERFACE**

With DELMIAWorks, there is a one database and one application to administer, and for users, a single, intuitive interface. It's easier for the users and eliminates data synchronization issues. DELMIAWorks lowers the costs and impact of change management across the board.

## **REAL TIME PRODUCTION & PROCESS MONITORING**

The real-time process monitoring of the MES built into the ERP empowers decision-makers to see what is going on the shop floor in real time, and also provides an artifact trail for traceability. By capturing critical information from machines, tools and other instruments, while production is ongoing, as parts are being produced, you can be confident that your production and quality plans are being executed well.

## **INDUSTRY EXPERIENCE**

We realize that our value to you comes from the industry experience of our managers, software engineers, trainers and implementers. The best way to understand your needs and priorities is to have walked in your shoes. This experience enables us to identify the right configuration of our many modules, features and configurations to provide you the best return on your investment.



# DETAILED LIST OF FEATURES & FUNCTIONALITY

## SUPPLY CHAIN MANAGEMENT

eCommerce Capability  
Demand Planning and Forecast  
ATP/CTP  
Distribution Management  
Manufacturing Planning  
Web Access  
Inter-Company Transactions  
Kanban/Heijunka Box  
Outsource Central  
Shipping Manager

## SCHEDULING AND PLANNING

Available To Promise (ATP)  
Capable To Promise (CTP)  
Forecasting/Planning  
Material Resource Planning (MRP)  
Master Production Scheduling (MPS)  
Infinite and Finite Scheduling  
Dispatch Lists  
Labor Capacity Planning  
Rough-Cut Machine Capacity Planning  
Auxiliary Equipment Planning  
Tool Tracking  
"Runs Best" Optimization

## HUMAN RESOURCES

Workforce Management  
Payroll  
Time and Attendance  
Training & Skill Tracking  
Resume and Performance Library  
Skill Match Capability  
Expense Tracking  
Employee Self-Service Portal

## SALES, ORDER, AND DISTRIBUTION MANAGEMENT

Customer Relationship Management (CRM)  
Sales Quotations  
Sales Orders  
Release Accounting  
Packing Slips & Shipping Management  
Labeling & Barcoding  
Web Portals  
Distribution Centers  
Warranty Tracking  
Product Configurator  
Return Material Authorizations (RMA)  
Multiple Price Books  
Certificates of Conformance  
Sales Commission Management

## WAREHOUSE AND INVENTORY MANAGEMENT

Inventory Control  
Location Management  
Kanban/Heijunka Box  
Serialized Inventory Control  
Lot Tracking  
Inter-Company Transactions  
Labeling  
Scanning  
Consignment  
Transaction Auditing  
Non-Conformance Review

## PROJECT MANAGEMENT

Job Shop  
Complete Project Accounting  
Financial Tracking

## SHOP FLOOR CONTROLS

RealTime Machine Monitoring  
Shop Floor Data Collection  
Exception Alerts  
RealTime Process Monitoring  
RTStation

## MANUFACTURING

Quoting/Estimating  
Bills of Material/Routings  
Preventative Maintenance  
Production Orders  
Production Reporting  
Project Management  
Material Management  
Job Shop  
Assembly Line Processing  
Tool Tracking  
Process Costing  
Equipment Automation

## UTILITIES

Multi-Language  
Multi-Plant/Company  
Trace Tracking  
Email Messaging  
Automatic Report Generation  
Business Activity Monitoring  
Workflow  
Shipping Company Interfaces  
Complete Role-Based Security  
User-Customized Views

## FINANCIAL MANAGEMENT

General Ledger  
Accounts Receivable  
Accounts Payable  
Electronic Transaction Processing  
Fixed Assets  
Invoicing  
Purchasing  
Multi-Company/Entity  
Multi-Currency  
Bank Account Maintenance  
Credit Card Processing  
Multi-Budget Capacity  
Standard & Actual Costing

## QUALITY

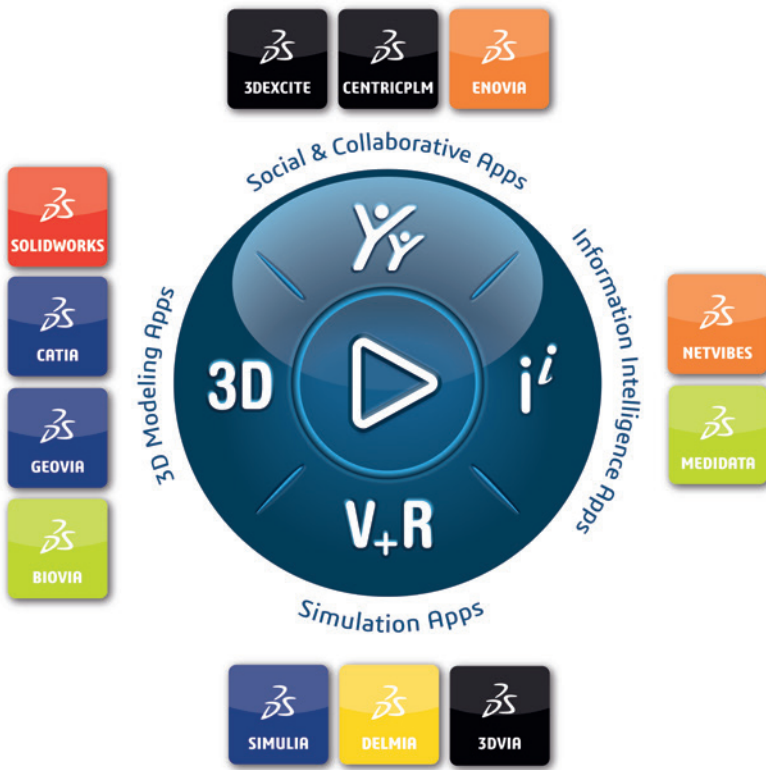
Audit Module  
Cost of Quality  
Advanced Product Planning (APOP)  
Process & Product Quality (PQ)  
Corrective Actions (CAR and CAPA)  
Document Control  
Engineering Change Order (ECO)  
Material Review Board (MRB)  
Part Dimension Setup & Gauges  
Statistical Process Control (SPC)  
Deviations/ Non-Conformances  
Quick Inspections  
Production Part Approval Process (PPAP)  
Control Plan  
Failure Mode and Effect Analysis (FMEA)  
Risk Assessment  
Product Lifecycle Management (PLM)  
Device History Record (DHR)  
Embedded Electronic Signatures

## EDI/ECOMMERCE

Inbound and Outbound Transaction Sets  
Transaction Mapping and Data Merging  
Extensive Trading Partners  
Web Portal Access  
Flat File Import  
XML Transactions  
Automatic Transaction Processing  
eKanban Tracking  
Non-Conformance Review

## MOBILITY

Tablets  
Smartphones



Our **3DEXPERIENCE®** platform powers our brand applications, serving 11 industries, and provides a rich portfolio of industry solution experiences.

Dassault Systèmes, the **3DEXPERIENCE** Company, is a catalyst for human progress. We provide business and people with collaborative virtual environments to imagine sustainable innovations. By creating 'virtual experience twins' of the real world with our **3DEXPERIENCE** platform and applications, our customers push the boundaries of innovation, learning and production.

Dassault Systèmes' 20,000 employees are bringing value to more than 270,000 customers of all sizes, in all industries, in more than 140 countries. For more information, visit [www.3ds.com](http://www.3ds.com).

**Americas**

Dassault Systèmes  
175 Wyman Street  
Waltham, Massachusetts  
02451-1223  
USA

**Europe/Middle East/Africa**

Dassault Systèmes  
10, rue Marcel Dassault  
CS 40501  
78946 Vélizy-Villacoublay Cedex  
France

**Asia-Pacific**

Dassault Systèmes K.K.  
ThinkPark Tower  
2-1-1 Osaki, Shinagawa-ku,  
Tokyo 141-6020  
Japan

© 2019 Dassault Systèmes. All rights reserved. 3DEXPERIENCE® the Company, Inc., the 3DS logo, BIOVIA, GEOVIA, COLINDORUS, 3DIA, ENOVIA, EXOLEDS, NETVIBES, MEDIDATA, CENTRICPLM, 3DPOCTE, SIMULIA, DELMIA, and 3DVIA are either registered trademarks or trademarks of Dassault Systèmes or its subsidiaries in the United States and/or other countries. All other trademarks are owned by their respective owners. Use of any Dassault Systèmes, or its subsidiaries trademarks is subject to their express written approval.