

JOB SHOP

OBJECTIVE

Build, track and manage projects with a complete, discrete manufacturing order program.

OVERVIEW

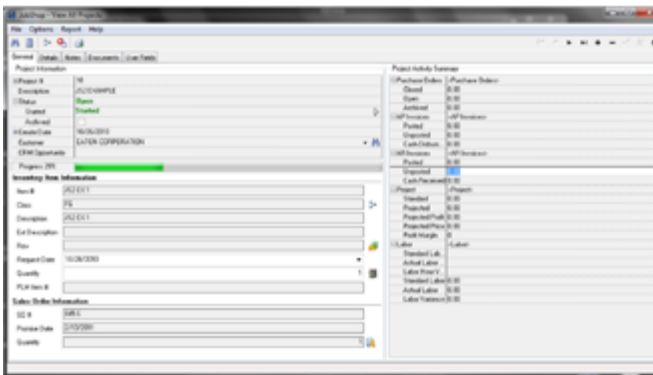
The JobShop module for DELMIAworks handles every aspect of you discrete manufacturing order effortlessly. A project management tool that supplements DELMIAworks’s capabilities, JobShop helps you build, track and manage projects with ease.

JobShop leads you through every step in the process: Create and define Bills of Material (BOMs) and routing diagrams, quote sales orders, calculate CTP, schedule work orders, flow the data into the product lifecycle management tool and issue purchase orders. JobShop’s quick summary feature allows you to see an overall snapshot of the project with additional drill down capability to view details like available inventory, project activity, allocated labor and work center hours, material exceptions, document control, work center data and percentage complete.

JobShop’s complete integration into DELMIAworks gives you access to all your favorite tools including inventory, preventative maintenance, purchasing and accounting. A more complicated project doesn’t require a more complicated program or workaround. Make discrete orders easy with DELMIAworks’s JobShop module.

KEY BENEFITS

- Create BOMs, routing diagrams, sales quotes and work orders with ease
- Stop toggling back and forth between screens with drill-down detail options that jump you to the source information
- Automatically track project status and labor/work center productivity
- Utilize assembly manufacturing types for unlimited processes per BOM with no part number change required
- Quote and review project costs in real-time, including inventory availability and CTP



The project general tab shows an overall snapshot, including percentage complete, with drill down capabilities for more in-depth information.

JOBSHOP: KEY FEATURES

Quick Project Summary

See an overall snapshot of your progress or drill down to see details about the various individual aspects of the project.

Utilize Assembly Manufacturing Types

Take advantage of unlimited processes and parallel operations per Bill of Material. Since no part number change is required, there is no need for a separate EPlant.

Cost Summary

Quote and review your project's costs in real time. Calculate the price, generate a sales quote with percent markups, calculate CTP and create a sales order. Roll up costs at the process level or as an overall summary.

Production and Labor Reporting

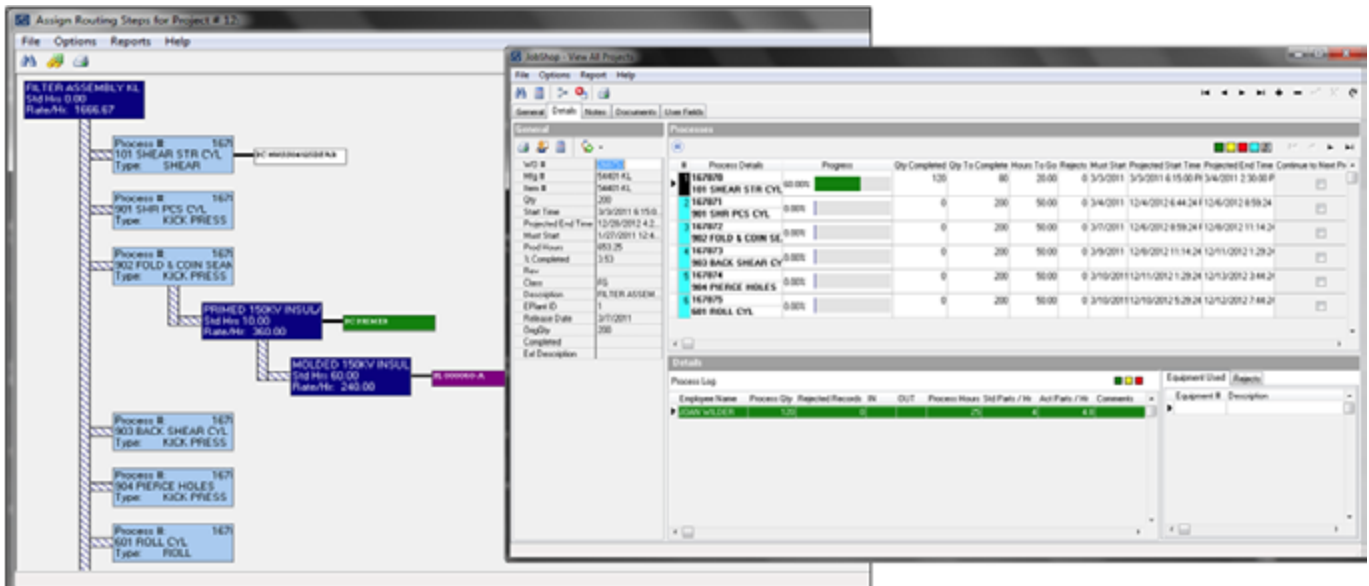
In the details tab, quickly view allocated labor and work center hours, plus your choice of percentage complete or parts complete.

Supplement DELMIAworks Capabilities

The inventory, quality control, product lifecycle management, preventative maintenance, accounting and warehouse management features of DELMIAworks are all intertwined into the JobShop application.

Routing Diagrams

Clearly visualize work order routing with a color-coded diagram that displays all the steps in the process. Clone an already existing route and make project specific modifications or start from scratch.



Create a new routing diagram from scratch or clone an existing route and make project specific modifications.

The details tab in JobShop shows the progress of every individual element in your routing diagram.

LEARN MORE

To learn more about JobShop or if you would like more information on the products and services from DELMIAworks, please visit www.3ds.com/delmiaworks.

Our **3DEXPERIENCE**® platform powers our brand applications, serving 11 industries, and provides a rich portfolio of industry solution experiences.

Dassault Systèmes, the **3DEXPERIENCE** Company, is a catalyst for human progress. We provide business and people with collaborative virtual environments to imagine sustainable innovations. By creating 'virtual experience twins' of the real world with our **3DEXPERIENCE** platform and applications, our customers push the boundaries of innovation, learning and production.

Dassault Systèmes' 20,000 employees are bringing value to more than 270,000 customers of all sizes, in all industries, in more than 140 countries. For more information, visit www.3ds.com.

