

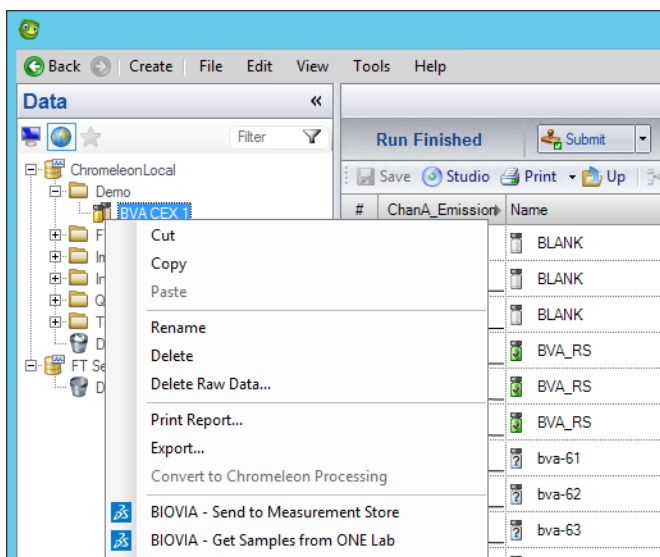
# BIOVIA CHROMATOGRAPHIC DATA SYSTEM (CDS) ADD-INS

## BI-DIRECTIONAL CDS INTERFACES FOR EMPOWER® AND CHROMELEON®

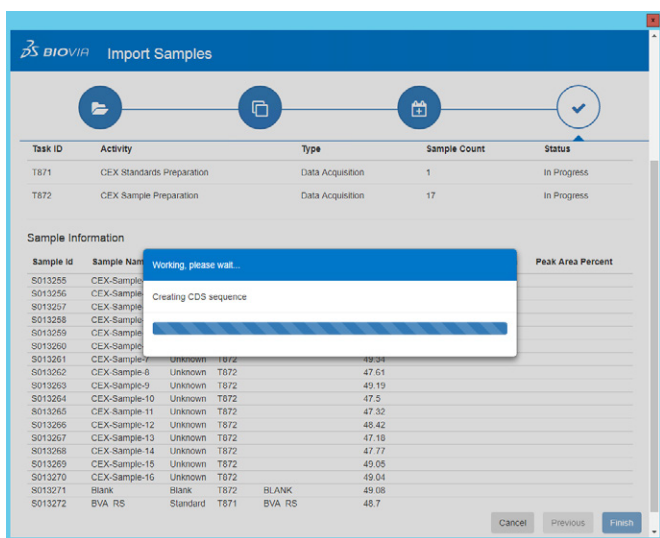
Datasheet

Chromatographic Data Systems (CDS) are widely used across labs. They generate process complex data sets where sample-related information of up to hundreds of samples needs to be included for new sequences. The results which CDS produce are complex, with information about peak heights, areas and retention times of sample sets. When extracted and entered manually into other lab informatics systems, these activities can be time-consuming, error-prone and non-value adding. Bi-directional interfaces to the most common CDS help scientists' productivity and outcome reliability.

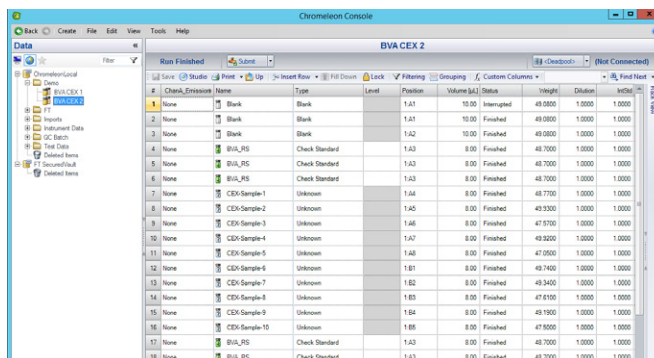
BIOVIA's CDS Add-Ins enable scientists to import sample information from BIOVIA Task Plan (including recipes) to the CDS, and send CDS result data back to the measurement store in BIOVIA Equipment, where it is available for further use in BIOVIA Capture and Task Plan. BIOVIA offers two optional Chromatography Data System (CDS) Add-Ins, for Waters® Empower® and for Thermo Fisher Scientific® Chromeleon®. The Add-Ins are extensions to the Empower and Chromeleon clients making it convenient for scientists as they work in their existing CDS.



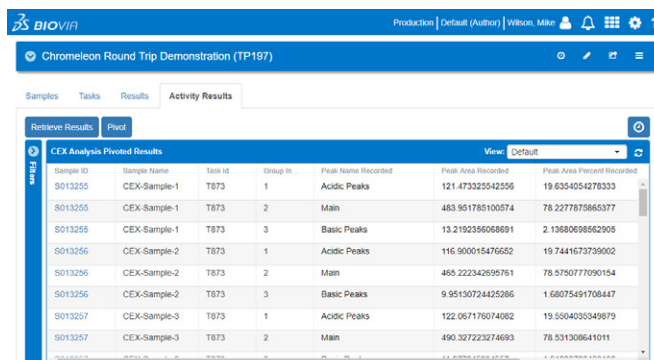
The scientist selects the tasks and results that should be imported into the CDS.



Sample information and task results are imported from BIOVIA and used to populate the new sequence in the CDS. No existing CDS data is over-written.



The scientists continue their CDS workflow using the features of the CDS software. When finished, the scientists can send the CDS results to BIOVIA where they can be added to the experiment results and write-up.



Scientists who do chromatographic testing need quick and easy access to their lab task and sample information when setting up a new sequence in the CDS. The BIOVIA CDS Add-In provides this via a web User Interface (UI) that is launched from the CDS client software itself:

## CAPABILITIES

- Sample Related Import into CDS
  - » Use existing sequence layouts for new sequence to control bracketing and injection types
  - » Import information of sample, control, and standard preparation tasks into Empower or Chromeleon supporting standard and custom data fields
  - » Control placement of imported data within the sequence or auto-replace by injection type
- Results Export from CDS
  - » Send peak data to BIOVIA including
    - All Empower data fields
    - A configurable list of Chromeleon data fields
    - Custom CDS fields
  - » Attach CDS report to measurement
    - Select from reports available in the Empower project
    - Designated "Electronic Report" from Chromeleon

## BENEFITS

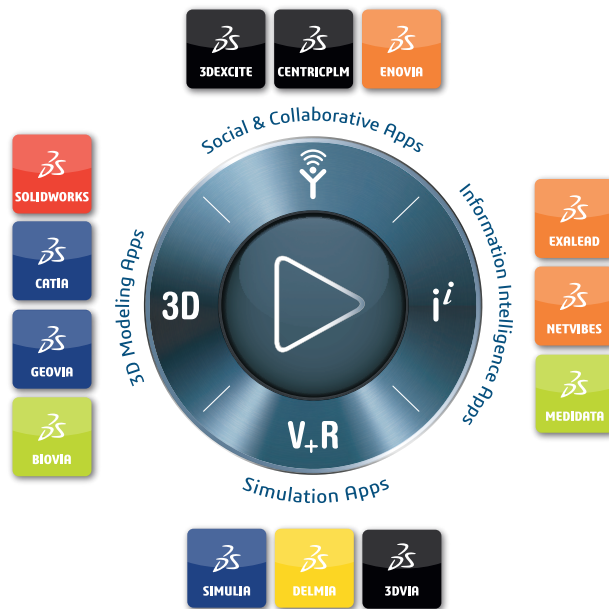
- Improve productivity and eliminate transcription errors by electronically importing the sample information from BIOVIA Task Plan into the CDS (runs can have 100s of samples)
- Improve productivity and eliminate transcription errors by automated data transfer of CDS results into BIOVIA Equipment
- Use the CDS Add-In immediately with sequence layout and design remaining in the CDS – no new UIs to learn
- Review data efficiently with access to source data files and reports
- Achieve data integrity and veracity through direct traceable data transfer in both directions

BIOVIA CDS Add-Ins are part of BIOVIA’s larger Unified Lab Management offering with a comprehensive set of lab informatics capabilities for lab planning and scheduling, resource and recipe management, lab execution and reporting and analytics.

## Our 3DEXPERIENCE® Platform powers our brand applications, serving 11 industries, and provides a rich portfolio of industry solution experiences.

Dassault Systèmes, the 3DEXPERIENCE Company, is a catalyst for human progress. We provide business and people with collaborative virtual environments to imagine sustainable innovations. By creating ‘virtual experience twins’ of the real world with our 3DEXPERIENCE platform and applications, our customers push the boundaries of innovation, learning and production.

Dassault Systèmes’ 20,000 employees are bringing value to more than 270,000 customers of all sizes, in all industries, in more than 140 countries. For more information, visit [www.3ds.com](http://www.3ds.com).



©2020 Dassault Systèmes. All rights reserved. 3DEXPERIENCE, the Compass icon, the 3DS logo, CATIA, BIOVIA, GEOVIA, SOLIDWORKS, 3DVIA, ENOVIA, EXALEAD, NETVIBES, MEDIDATA, CENTRIC PLM, 3DEXCITE, SIMULIA, DELMIA, and 3DVIA are commercial trademarks or registered trademarks of Dassault Systèmes, a French “société européenne” (Versailles Commercial Register # B.32.2.306.44D), or its subsidiaries in the United States and/or other countries. All other trademarks are owned by their respective owners. Use of any Dassault Systèmes or its subsidiaries trademarks is subject to their express written approval.